

CLIENT  
**DUFFERIN - 401 PROPERTIES LIMITED & COLLECDEV INC.**

COPYRIGHT  
This drawing has been prepared solely for the intended use. This reproduction or distribution for any purpose other than authorized by IBI Group is forbidden. Written dimensions shall have precedence over scaled dimensions. Contractors shall verify and be responsible for all dimensions and conditions on the job, and IBI Group shall be informed of any variations from the dimensions and conditions shown on the drawing. Shop drawings shall be submitted to IBI Group for general conformance before proceeding with fabrication.

IBI Group Professional Services (Canada) Inc.  
a member of the IBI Group of companies

ISSUES

| No. | DESCRIPTION    | DATE         |
|-----|----------------|--------------|
| 1   | ISSUED FOR SPA | AUG 02, 2022 |

LEGEND

LEGEND



**Toronto** ENGINEERING & CONSTRUCTION SERVICES DIVISION

ACCEPTED TO BE IN ACCORDANCE WITH THE CITY OF TORONTO STANDARDS. THIS ACCEPTANCE IS NOT TO BE CONSTRUED AS VERIFICATION OF ENGINEERING CONTENT.

MANAGER, DEVELOPMENT ENGINEERING DATE

IBI GROUP  
Unit 300 - 8133 Warden Avenue  
Markham ON L6G 1B3 Canada  
Tel 905 763 2322 Fax 905 763 9983  
ibigroup.com

PROJECT  
**3400 DUFFERIN STREET & 8 JANE OSLER BOULEVARD**

TORONTO, ONTARIO, M6A 2V1

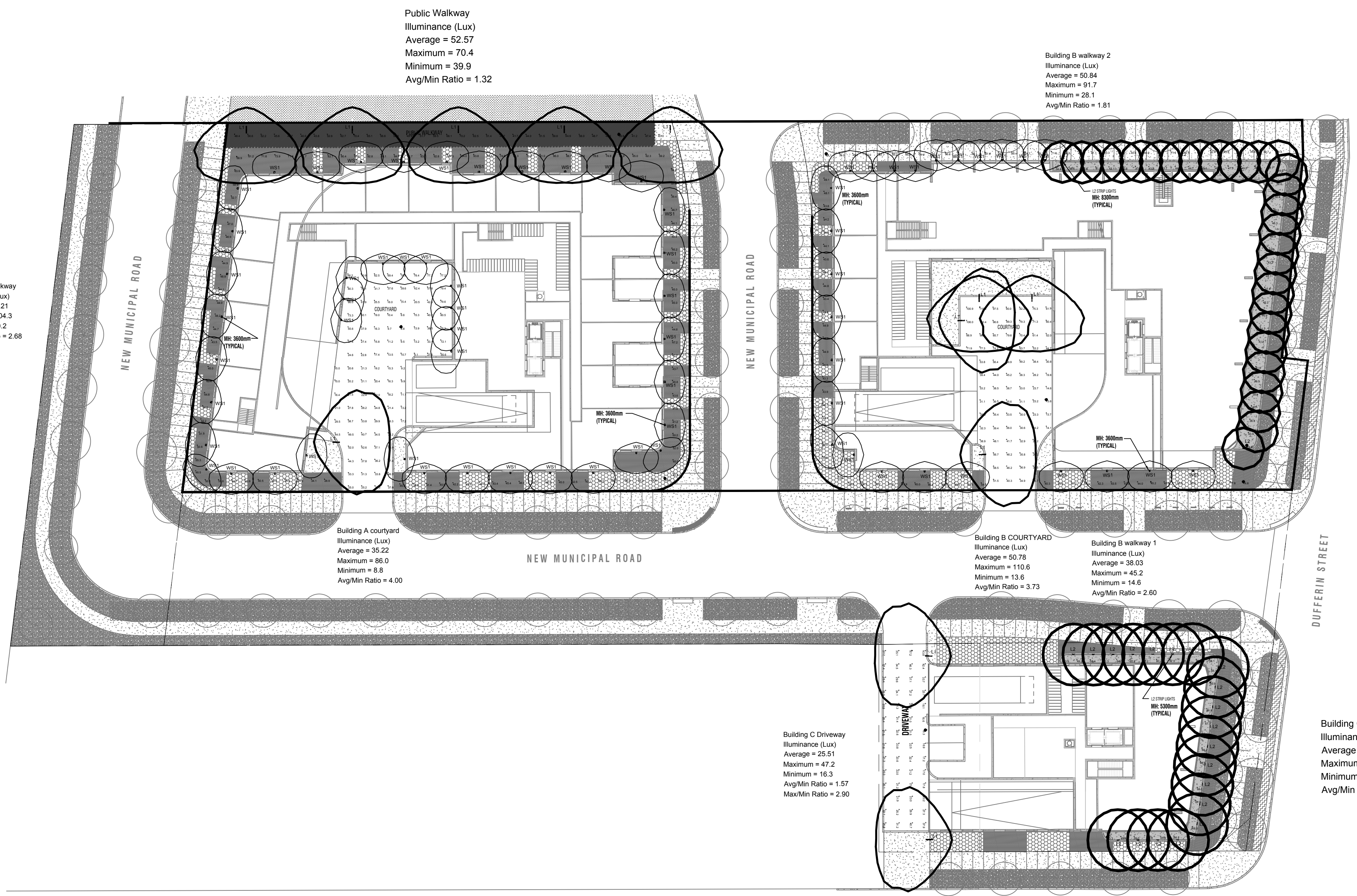
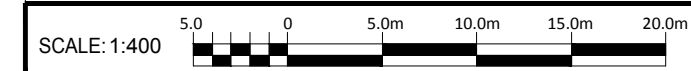
PROJECT NO:  
139570

DRAWN BY: **KB** CHECKED BY: **KB**

PROJECT MGR: **JJ** APPROVED BY: **OA**

SHEET TITLE  
**LIGHTING PLAN**

SHEET NUMBER **EL-01** ISSUE **01**



Building A Walkway  
Illuminance (Lux)  
Average = 54.21  
Maximum = 104.3  
Minimum = 20.2  
Avg/Min Ratio = 2.68

Public Walkway  
Illuminance (Lux)  
Average = 52.57  
Maximum = 70.4  
Minimum = 39.9  
Avg/Min Ratio = 1.32

Building B Walkway 2  
Illuminance (Lux)  
Average = 50.84  
Maximum = 91.7  
Minimum = 28.1  
Avg/Min Ratio = 1.81

Building B Canopy  
Illuminance (Lux)  
Average = 43.92  
Maximum = 54.5  
Minimum = 29.6  
Avg/Min Ratio = 1.48

Building A Courtyard  
Illuminance (Lux)  
Average = 35.22  
Maximum = 86.0  
Minimum = 8.8  
Avg/Min Ratio = 4.00

Building B COURTYARD  
Illuminance (Lux)  
Average = 50.78  
Maximum = 110.6  
Minimum = 13.6  
Avg/Min Ratio = 3.73

Building B Walkway 1  
Illuminance (Lux)  
Average = 38.03  
Maximum = 45.2  
Minimum = 14.6  
Avg/Min Ratio = 2.60

Building C Driveway  
Illuminance (Lux)  
Average = 25.51  
Maximum = 47.2  
Minimum = 16.3  
Avg/Min Ratio = 1.57  
Max/Min Ratio = 2.90

Building C Canopy  
Illuminance (Lux)  
Average = 62.53  
Maximum = 69.0  
Minimum = 33.3  
Avg/Min Ratio = 1.88

Luminaire Schedule

| Symbol | Qty | Label | Arrangement | LLF   | Description                  | Lum. Watts |
|--------|-----|-------|-------------|-------|------------------------------|------------|
|        | 70  | WS1   | SINGLE      | 0.850 | 22383_BEGA_IES               | 21         |
|        | 47  | L2    | SINGLE      | 0.850 | XOOLIGHT_HYDRA_HD36_W830_OP  | 36         |
|        | 12  | L1    | SINGLE      | 0.850 | BLDS-SD-120_277-CSL-L140-30K | 140        |

Calculation Summary

| Label                | CalcType    | Units | Avg   | Max   | Min  | Avg/Min |
|----------------------|-------------|-------|-------|-------|------|---------|
| Building A Courtyard | Illuminance | Lux   | 35.22 | 86.0  | 8.8  | 4.00    |
| Building A Walkway   | Illuminance | Lux   | 54.21 | 104.3 | 20.2 | 2.68    |
| Building B Canopy    | Illuminance | Lux   | 43.92 | 54.5  | 29.6 | 1.48    |
| Building B Courtyard | Illuminance | Lux   | 50.78 | 110.6 | 13.6 | 3.73    |
| Building B Walkway 1 | Illuminance | Lux   | 38.03 | 45.2  | 14.6 | 2.60    |
| Building B Walkway 2 | Illuminance | Lux   | 50.84 | 91.7  | 28.1 | 1.81    |
| Building C Canopy    | Illuminance | Lux   | 62.53 | 69.0  | 33.3 | 1.88    |
| Building C Driveway  | Illuminance | Lux   | 25.51 | 47.2  | 16.3 | 1.57    |
| Public Walkway       | Illuminance | Lux   | 52.57 | 70.4  | 39.9 | 1.32    |

File Location: J:\139570\_3400Dufferin7.0\_Production\7.0\_Production\7.03\_Design\14\_Elec-Bldg\Photometric layout\139570-EL-LIGHTING PLAN.dwg Last Saved: August 2, 2022, by Ihabed Badar Plotted: Tuesday, August 2, 2022 4:13:38 PM by Khaled Badar

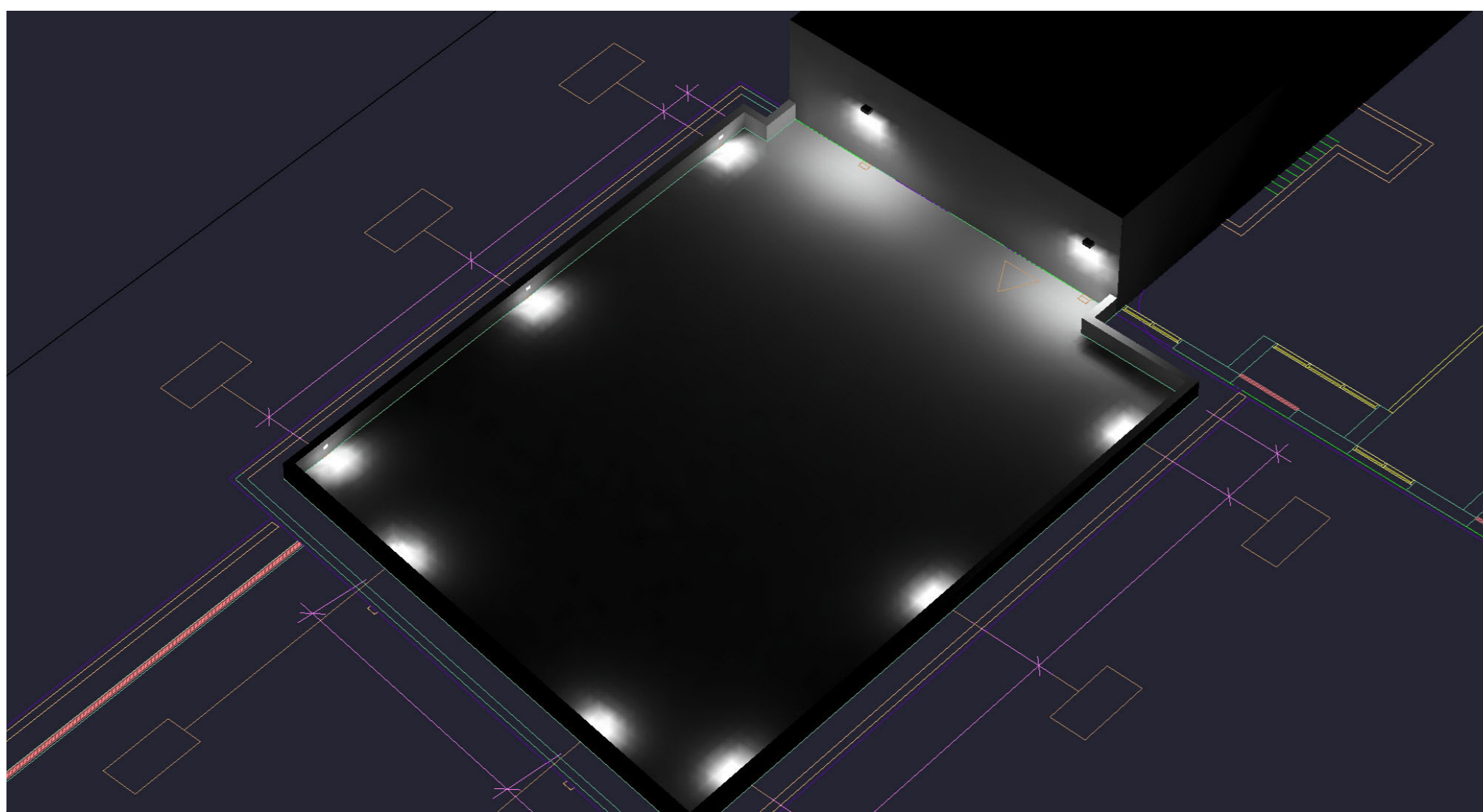




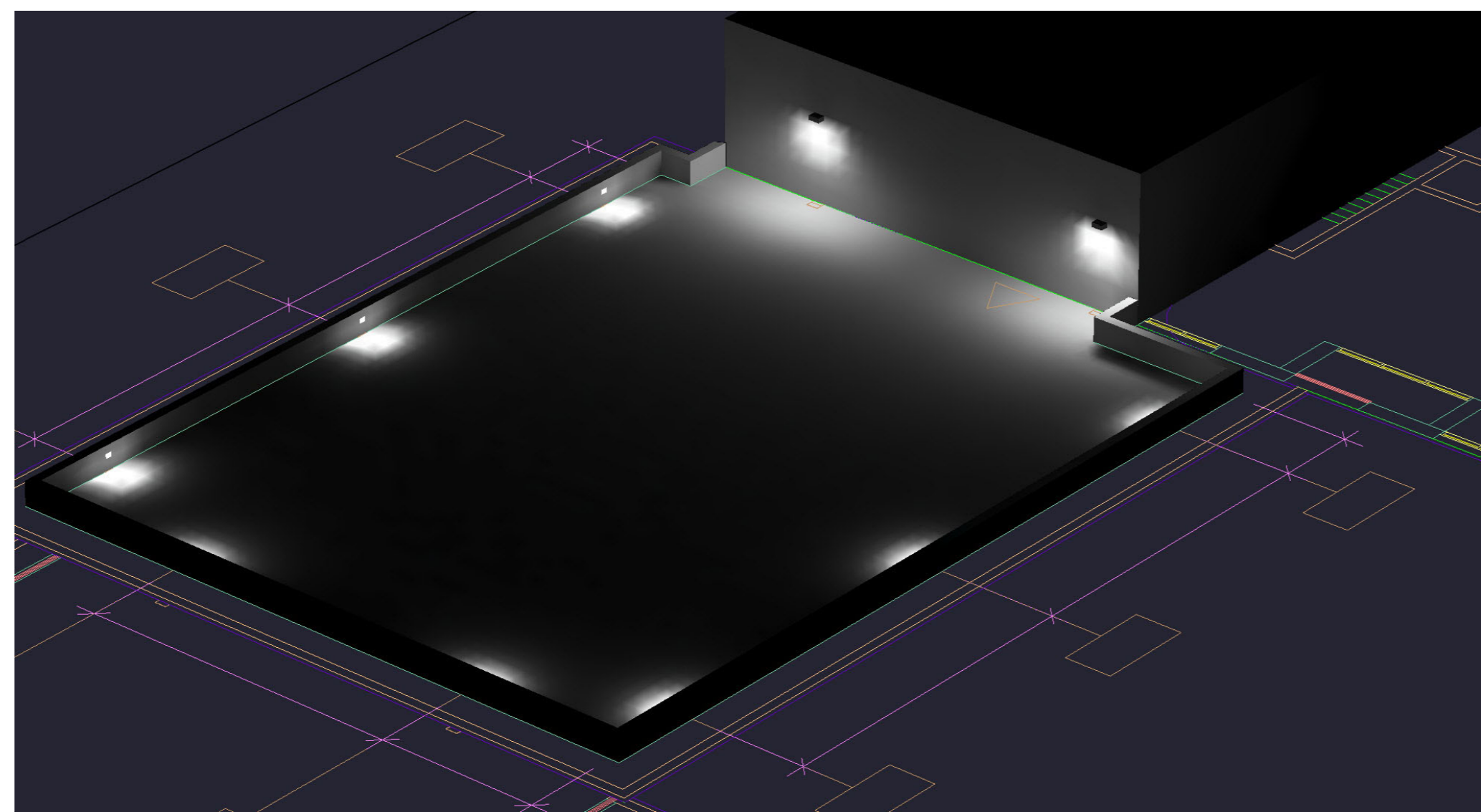




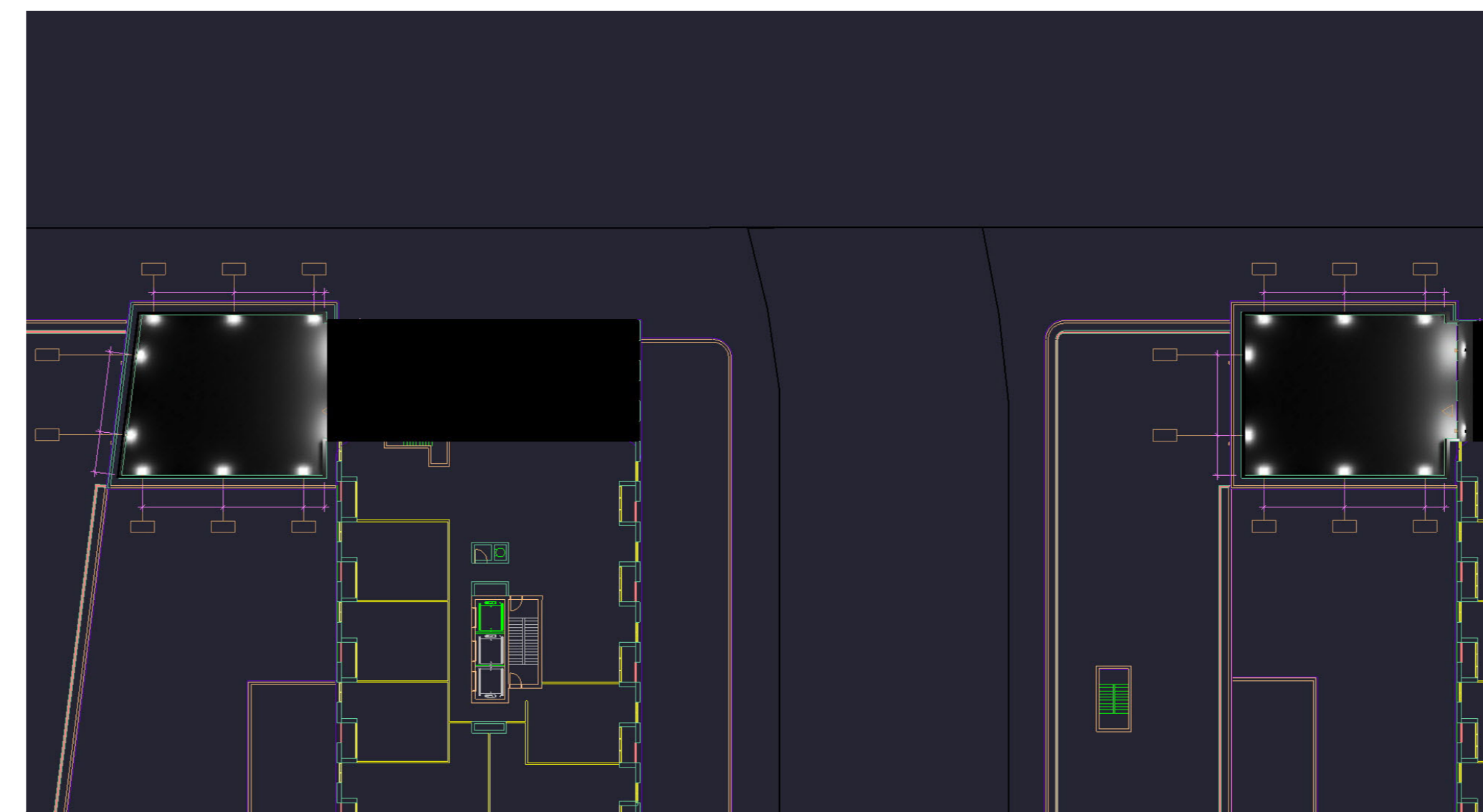




Render Image - View Name : BUILDING-A

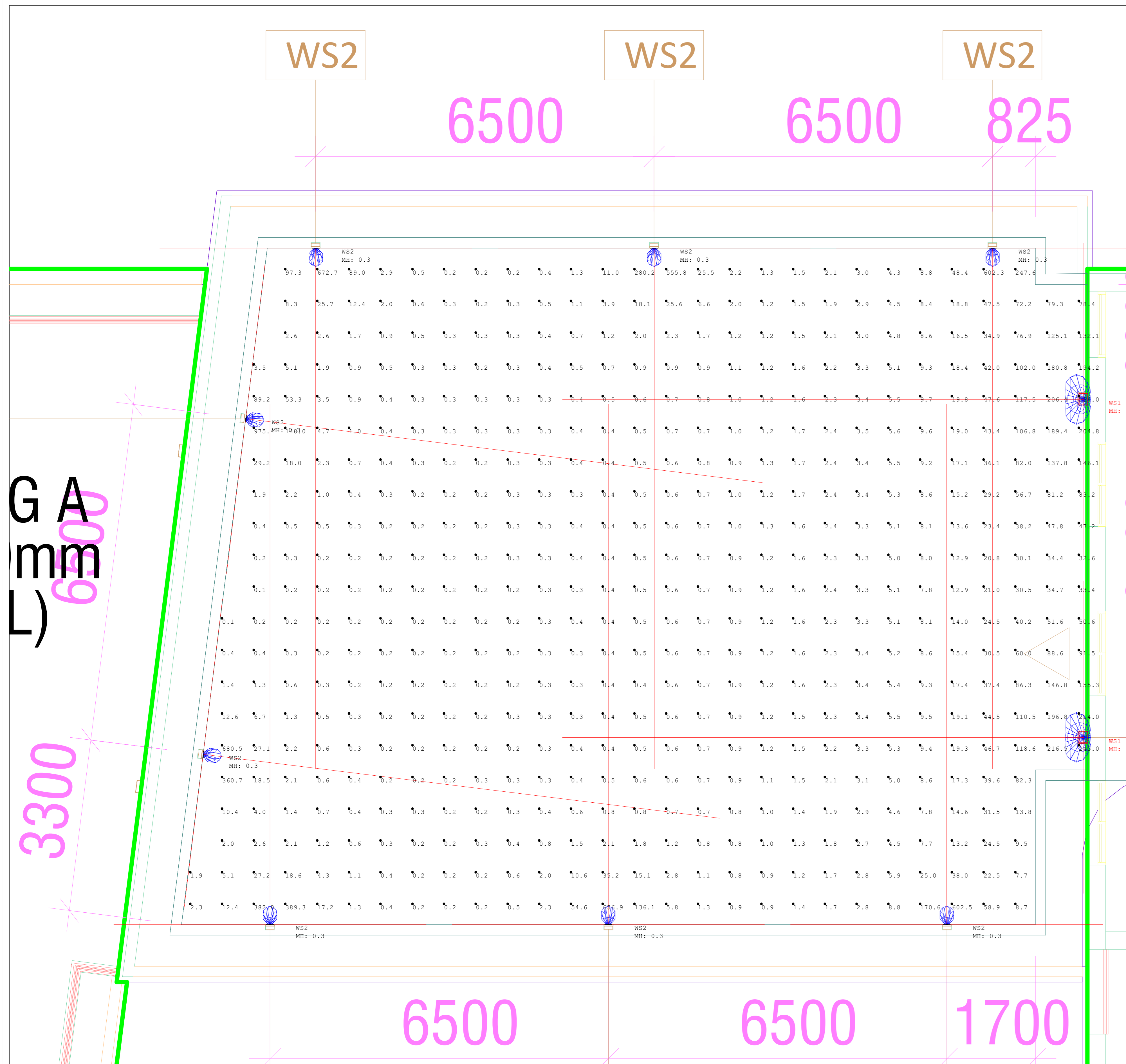


Render Image - View Name : BUILDING-B

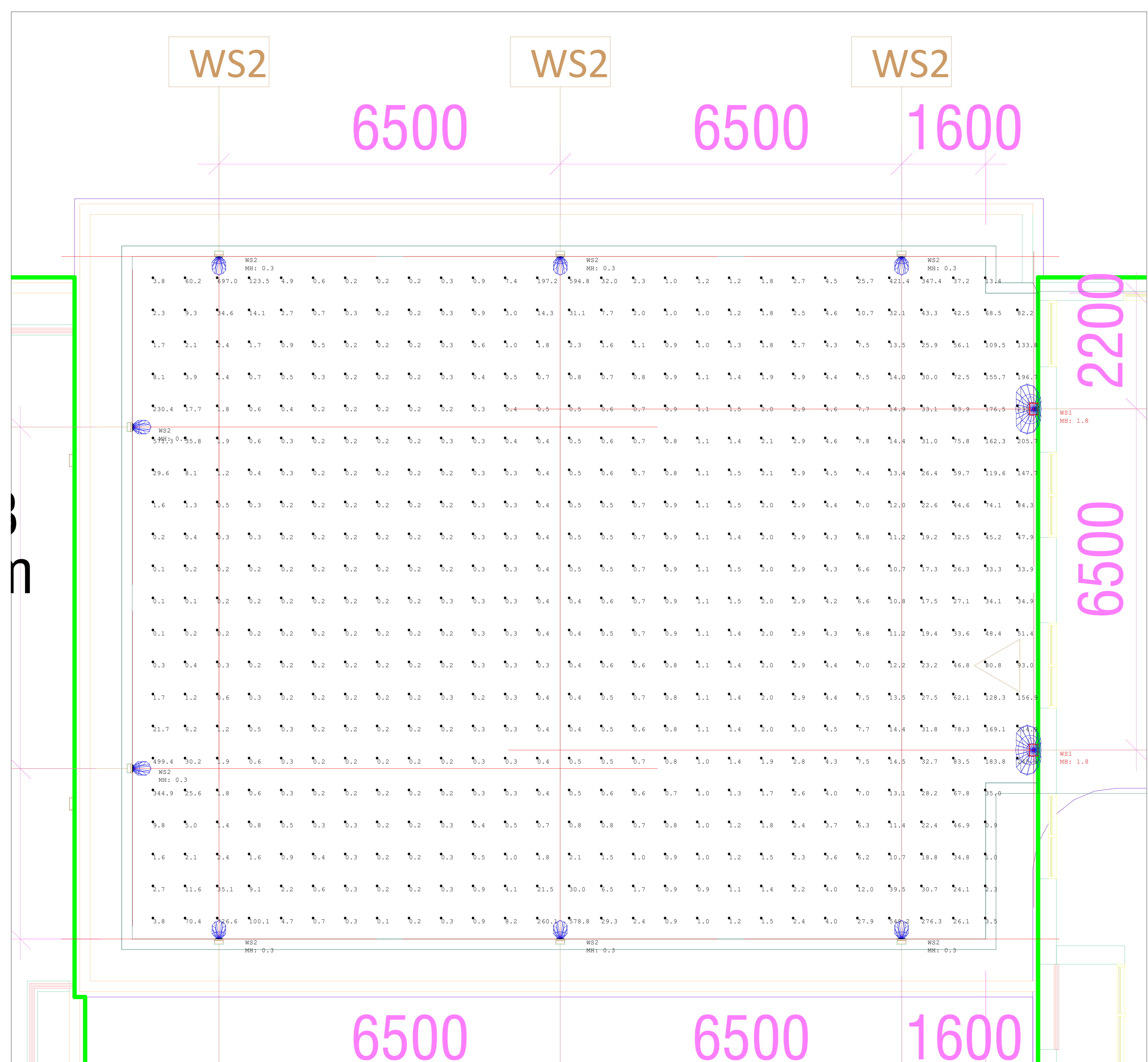


Render Image - View Name : RenderViewpoint\_1

- NOTES:
1. Photometric calculation values provided herein are for reference purposes only and do not represent a guarantee of performance of the luminaire(s) indicated for a given room, space, or area. All calculations were performed using methods and software as recommended by the Illumination Engineering Society of North America (IESNA) and/or best industry practices. The accuracy of this calculation is dependent on many factors including, but not limited to: accuracy of Architectural /Design information such as room dimension, surface finishes, reflectance, materials, etc., accuracy of Manufacturer photometric information; and accuracy of parametric information such as mounting height, configuration, etc. Real-world environmental factors such as dust and dirt, power quality, ambient temperature, etc. can also significantly affect luminaire performance. As such, actual photometric performance of indicated luminaire(s) may differ from the calculated performance presented.
  2. This photometric analysis has been provided in good faith and includes all relevant data available at the time it was performed but it does not carry any warranty as to the accuracy or code compliance of the design. The Engineer of Record (EOR)/Architect of Record (AOR) for the associated project shall bear all responsibility for code compliance, lighting system design/performance/compatibility and installation methods. TPL Lighting is not responsible for any losses resulting from the use in-whole or in-part of this photometric analysis.
  3. This photometric analysis shall not constitute as a "Construction" or "Contract" document. TPL Lighting assumes no liability with respect to any reliance placed on this document in this regard, if this document is incorporated into or used as part of a "Construction" or "Contract" document package, the EOR/AOR for the associated project assumes the entire risk as to the accuracy, completeness, reliability or otherwise of the information contained in said document package.
  4. Light Loss Factors (LLF) have been calculated based on a multiplication of factors such as Lamp Lumen Depreciation (LLD), Lamp Dirt Depreciation (LDD), Ambient Temperature (T), Ballast Factor (BF), etc. in accordance with the recommendations of the IESNA and/or the luminaire manufacturer(s). LLFs for each luminaire is indicated in the Luminaire Schedule.
  5. Unless noted otherwise, surface reflectances of 80% (ceiling), 50% (walls) and 20% (floors) have been used for the purposes of this calculation.
  6. Unless noted otherwise, calculation points are measured at tread level for Outdoor and at 2.5' (762mm) AFF for all work spaces.



View\_1:Plan Rotated 0 Tilted 0  
Photometric-BUILDING A



View\_1:Plan Rotated 0 Tilted 0  
Photometric-BUILDING B

| Calculation Summary |             |       |       |       |     |         |
|---------------------|-------------|-------|-------|-------|-----|---------|
| Label               | CalcType    | Units | Avg   | Max   | Min | Avg/Min |
| BUILDING A Planar   | Illuminance | Lux   | 25.58 | 975.4 | 0.1 | 255.80  |
| BUILDING B Planar   | Illuminance | Lux   | 22.76 | 726.6 | 0.1 | 227.60  |

| Luminaire Schedule |     |                  |       |                    |     |            |
|--------------------|-----|------------------|-------|--------------------|-----|------------|
| Symbol             | Qty | Label            | LLF   | Description        | Tag | Lum. Watts |
| □                  | 4   | 22383 BEGA IES   | 0.800 | TPL BEGA USA 22383 | WS1 | 21         |
| □                  | 16  | 24203R3 BEGA IES | 0.800 | TPL BEGA USA 24203 | WS2 | 7          |

TPL Lighting  
25 Ripley Ave, Toronto, ON  
Telephone: 416-538-8989  
Email: info@tplighting.com

agent:VK drawn:MK  
date: 2022-08-09

project name:  
3400 Dufferin\_Level 8  
drawing:  
Version Via