

3400 DUFFERING STREET

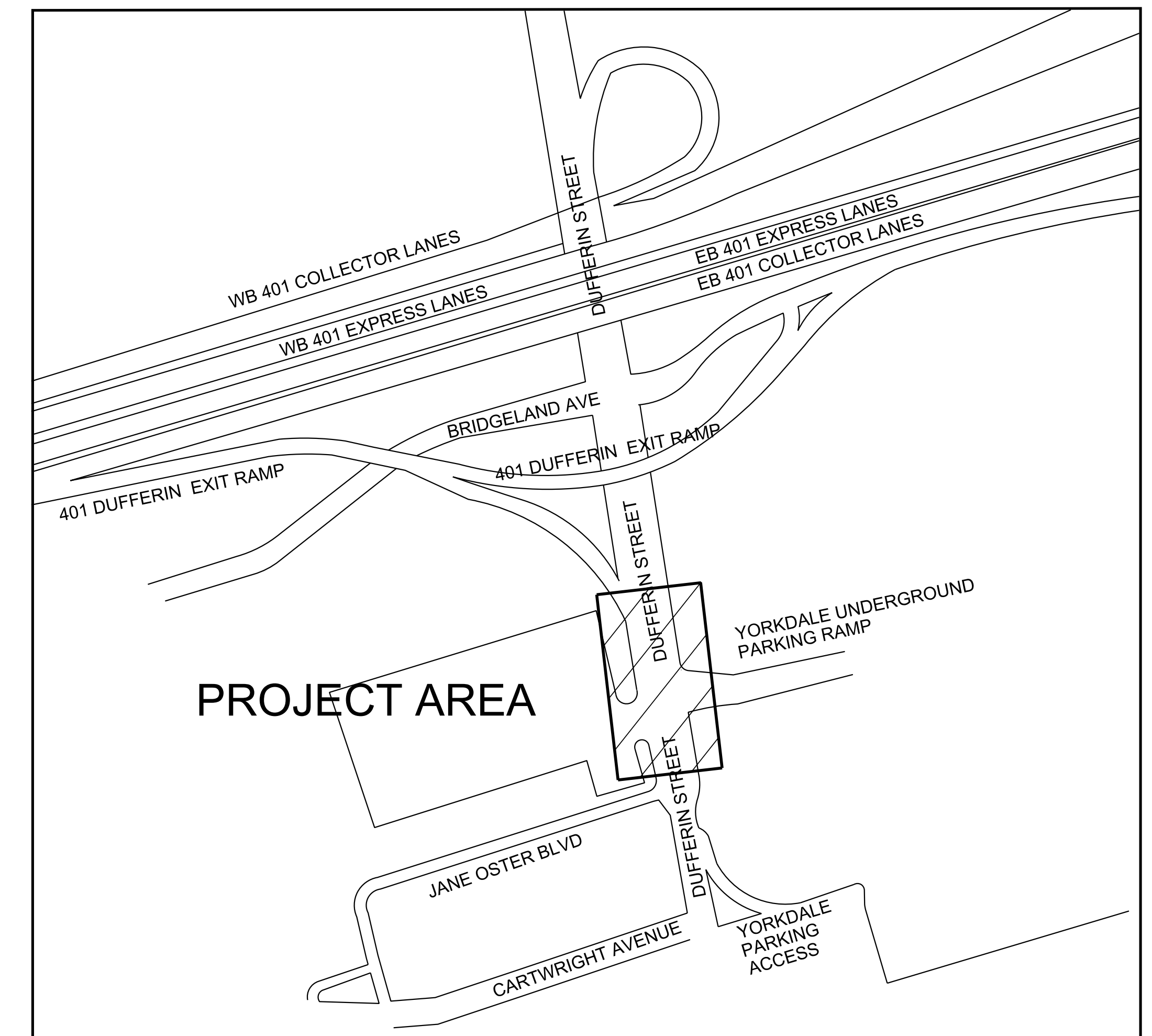
OFF-SITE DEVELOPMENT

CONTRACT No. XXXXX

LIST OF DRAWINGS

COVER SHEET

- 1 - GENERAL NOTES AND TYPICAL SECTIONS
- 2 - REMOVALS
- 3 - NEW CONSTRUCTION
- 4 - PAVEMENT MARKINGS AND SIGNAGE



LOCATION PLAN

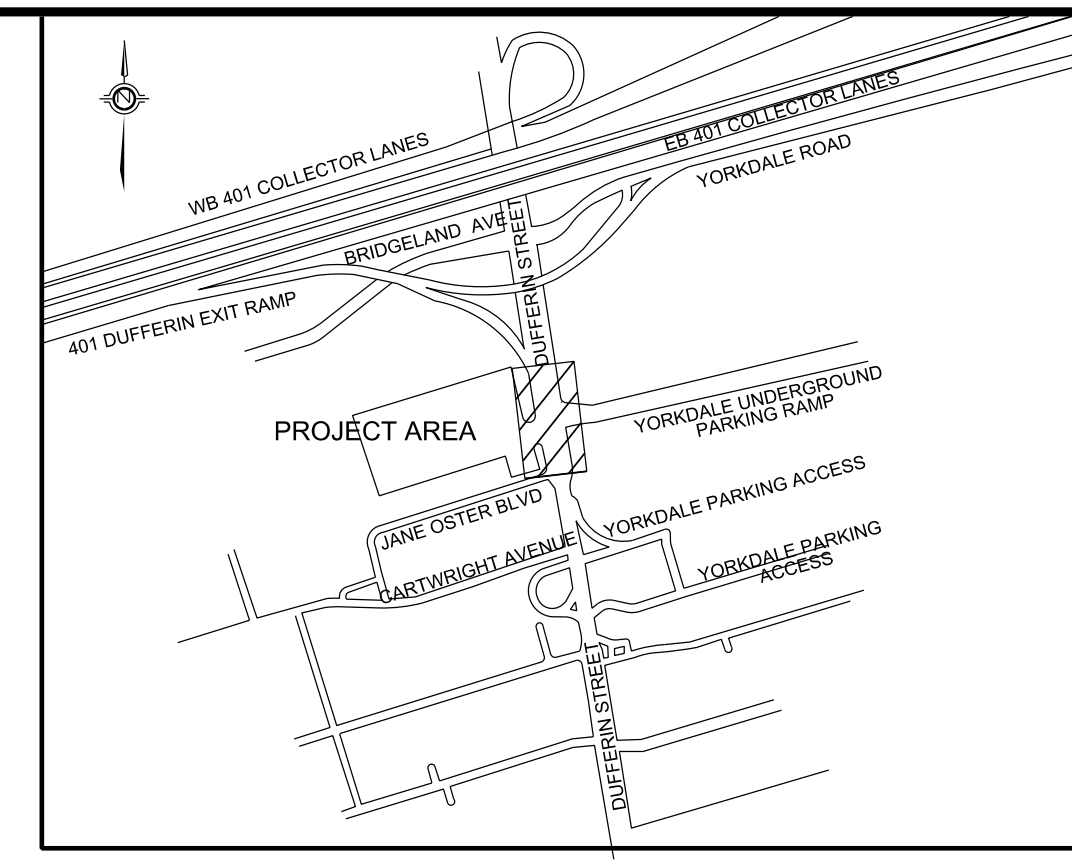
ACCEPTED TO BE IN ACCORDANCE WITH THE CITY OF TORONTO STANDARDS.
THIS ACCEPTANCE IS NOT TO BE CONSTRUED AS VERIFICATION OF ENGINEERING CONTENT.

MANAGER, DEVELOPMENT ENGINEERING

DATE _____

NOT FOR CONSTRUCTION

ISSUED FOR REVIEW



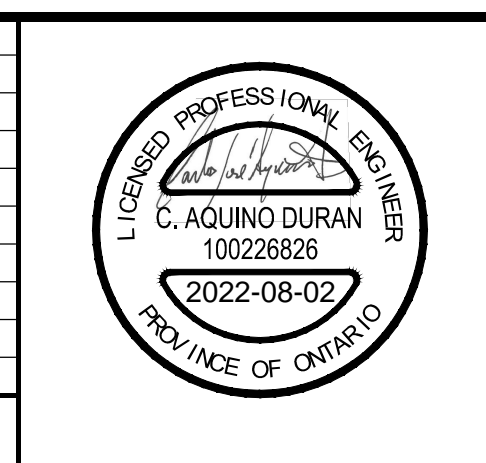
LEGEND

- REMOVAL OF ASPHALT
- REMOVAL OF CONCRETE
- REMOVAL OF INTERLOCKING PAVEMENT
- REMOVAL SYMBOL (LINEAR)
- REMOVAL SYMBOL
- PROPERTY LINE

NOT FOR CONSTRUCTION

--	--	--	--	--	--	--	--	--	--

No.	DATE	REVISIONS	INITIAL	SIGNED
1	2022/07/29	ISSUED FOR REVIEW		C.A.

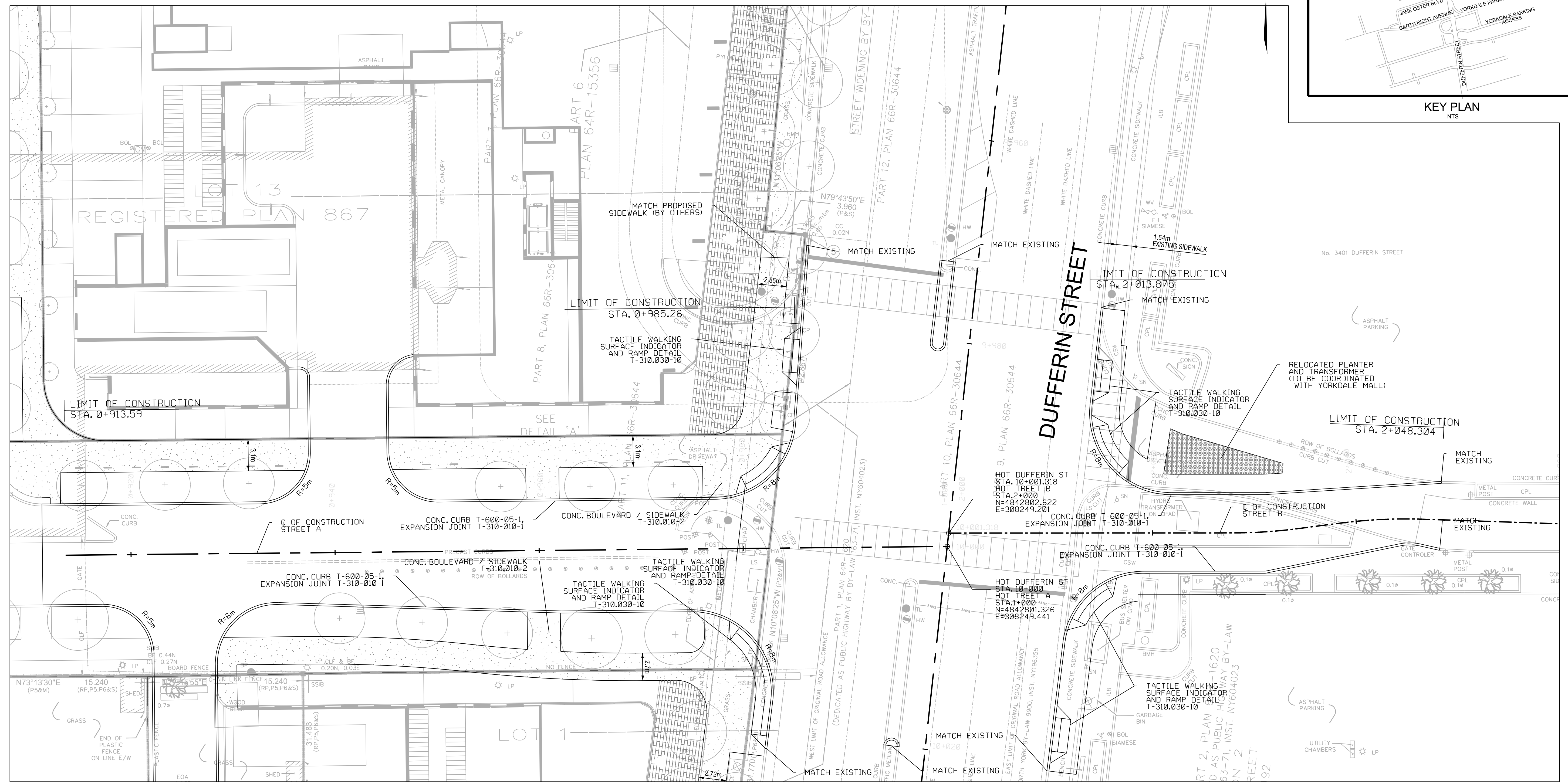
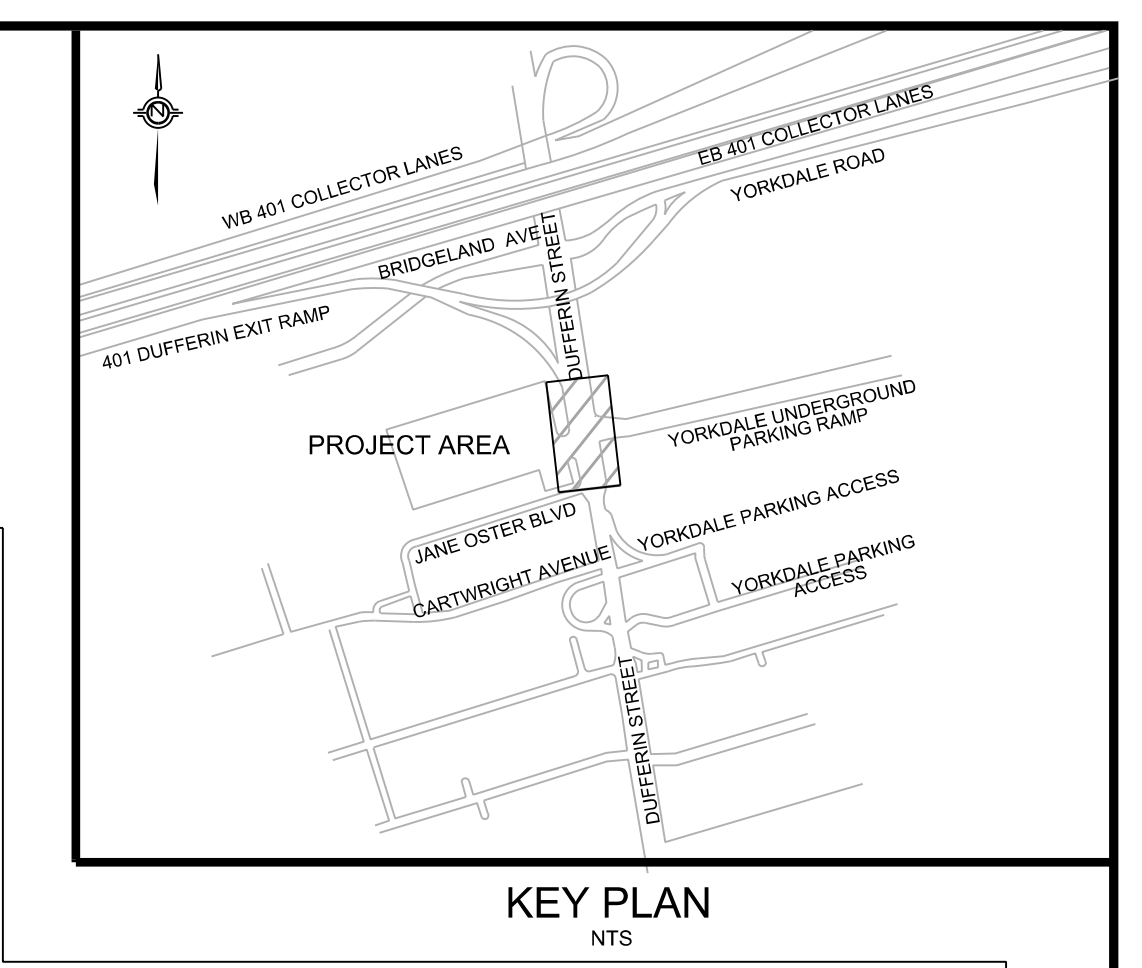


Toronto ENGINEERING AND CONSTRUCTION SERVICES DIVISION

ACCEPTED TO BE IN ACCORDANCE WITH THE CITY OF TORONTO STANDARDS. THIS ACCEPTANCE IS NOT TO BE CONSTRUED AS VERIFICATION OF ENGINEERING CONTENT.

MANAGER, DEVELOPMENT ENGINEERING
DATE _____

3400 DUFFERIN STREET					
OFF-SITE DEVELOPMENT					
REMOVALS					
DESIGN:	CA	DRAFTING:	JM	CHECK:	GH
SCALE:	HOR 1:200		DRAWING NUMBER:		
DATE:	JULY, 2022		CONTRACT No. XXXXX		2



LEGEND

- PROPOSED CONCRETE CURB
- PROPERTY LINE

NOTES:

1. THE CONTRACTOR SHALL CONFIRM EXISTING AND PROPOSED PAVEMENT ELEVATIONS TO ENSURE POSITIVE DRAINAGE IS PROVIDED BOTH IN CROSS-FALL AND LOGITUDINAL DIRECTION TO THE EXISTING AND PROPOSED CATCH BASINS.
2. THE CONTRACTOR IS TO ENSURE POSITIVE DRAINAGE IS PROVIDED TO NEW CATCH BASIN OUTLETS FOR ALL PROPOSED SUB-DRAIN INSTALLATIONS.
3. CONTRACTOR IS DETERMINE THE SLOPE OF THE EXISTING CB LEAD AND EXTEND THE LEAD AT THE EXISTING PIPE SLOPE.
4. ALL MANHOLES IMPACTED BY THE PROPOSED WORK ARE TO BE ADJUSTED TO FINAL GRADE.
5. ASPHALT PAVEMENT ONLY SHALL BE 40mm HL3 AND 80mm HL8 (HS)
6. LIMIT OF CONSTRUCTION MAY BE ADJUSTED IF THE EXISTING ROAD BASE IS NOT COMPETENT.
7. CB LEAD IS TO BE INSULATED WITH STYROFOAM (1.2m WIDTH ABOVE CENTRE OF PIPE, 50mm THICKNESS, PLACED 200mm ABOVE PIPE CROWN).

NOT FOR CONSTRUCTION

No.	DATE	REVISIONS	INITIAL	SIGNED
1	2022/07/29	ISSUED FOR REVIEW	C.A.	



Toronto ENGINEERING AND CONSTRUCTION SERVICES DIVISION

ACCEPTED TO BE IN ACCORDANCE WITH THE CITY OF TORONTO STANDARDS. THIS ACCEPTANCE IS NOT TO BE CONSTRUED AS VERIFICATION OF ENGINEERING CONTENT.

MANAGER, DEVELOPMENT ENGINEERING
DATE _____

3400 DUFFERIN STREET
OFF-SITE DEVELOPMENT

NEW CONSTRUCTION

DESIGN:	CA	DRAFTING:	JM	CHECK:	GH	CONTRACT No.	XXXXX
SCALE:	HOR 1:200			DRAWING NUMBER:			
DATE:	JULY, 2022					3	

